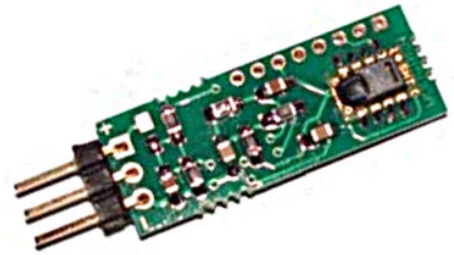


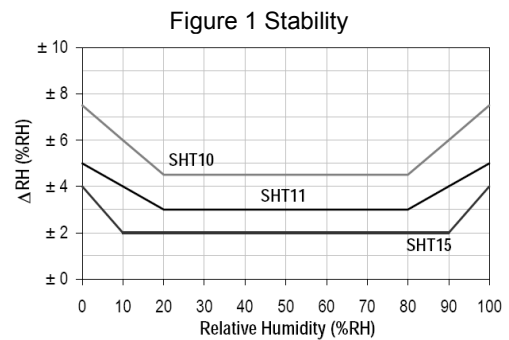
- Sensitive Elements adopt import integrated temperature and humidity sensor
- Voltage /PWM singal output, the scope is optional.
- Ratio-voltage output, linear response
- With functions of temperature compensation, with high precision
- With functions of heated desiccant (95%RH) , high condensation resistance
- Fast response time,excellent long-term stability



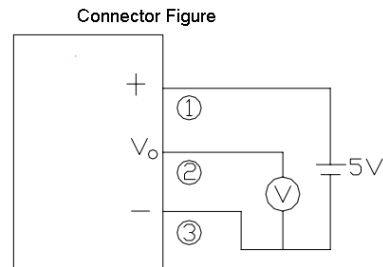
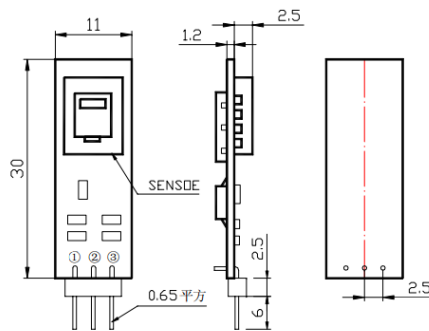
Technical Data

item	Parameter
Measurement Range	0...100% RH
Accuracy at 25°C	See ordering code
Stability	< 0.5%RH / year
Response	< 8s(63%,type Value)
power supply	5V±0.5V
Operating temperature	-25~70°C

Stability



Dimension



Ordering Guide

SERIES	OUTPUT	Output Range
FHM10	Voltage Output	1 0 ~ 1V
		2 0.38 ~ 3.68V
		3 0.8 ~ 3.9V
		4 1 ~ 4V
		5 0 ~ 100% (120Hz)
	PWM Output	