

R Y01 series thermal fuse is a non-resetting protective device, which is used to prevent various electrical and heating appliance, dynamoelectric tools and industrial equipment from overheating. When the working temperature exceeds the rated value, the molten substance would cut the circuit rapidly and avoid the damage caused by overheating.



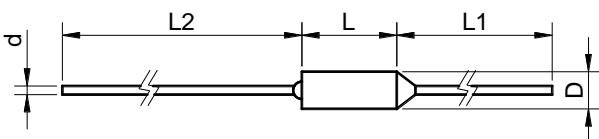
Typical Applications

- Fanner, ventilator
- Smoke extractor
- washing machine
- Juice extractor and blower etc.
- Electric cooker
- micro-Wave oven
- Water heater
- Electric iron
- Electric radiator etc.
- lighting appliance and game player etc.

Features

- Tiny size, metal shell
- High precision, non-resetting
- Precision and stable action temperature

Dimensions (mm)



Model	Size				
	L	L1	L2	D	d
R Y01	11	18	35	4.3	1.0

Ordering Guide

R Y01 - 110

R Y01 series thermal fuse Rating Action Temperature

Technical Parameters:

Model	Rating Action Temp.	Fusing Off Temp.	Holding Temp. T _C	Max. Temp. T _m	Electrical characteristics			APPROVALS		
	T _r (°C)	T _f (°C)	(°C)	(°C)	Rated Voltage	Rated Currency	TÜV	VDE	CCC	
					AC (V)	A				
R Y01-55	55	52±2	35	120	250	10	15	●		○
R Y01-65	65	63 ⁺¹ ₋₃	40	120	250	10	15	●		○
R Y01-70	70	68 ⁺² ₋₃	45	120	250	10	15	●		○
R Y01-76	76	73 ⁺² ₋₃	45	120	250	10	15	●		○
R Y01-80	80	78 ⁺² ₋₃	55	150	250	10	15	●		○
R Y01-85	85	80±2	55	150	250	10	15	●		○
R Y01-92	92	90±2	65	150	250	10	15	●		○
R Y01-96	96	94±2	65	150	250	10	15	●	●	○
R Y01-100	100	97 ⁺² ₋₃	65	150	250	10	15	●	●	○
R Y01-105	105	100 ⁺⁴ ₋₃	70	150	250	10	15	●		○
R Y01-110	110	106±2	75	150	250	10	15	●		○
R Y01-113	113	110 ⁺² ₋₃	80	150	250	10	15	●		○
R Y01-115	115	110±3	80	150	250	10	15	●		○
R Y01-121	121	119 ⁺² ₋₃	90	180	250	10	15	●		○
R Y01-123	123	120 ⁺² ₋₃	90	180	250	10	15	●		○
R Y01-125	125	120 ⁺³ ₋₂	90	180	250	10	15	●		○
R Y01-128	128	124±3	90	180	250	10	15	●		○
R Y01-130	130	127±3	100	180	250	10	15	●		○
R Y01-133	133	130±3	100	180	250	10	15	●		○
R Y01-135	135	130±3	100	180	250	10	15	●	●	○
R Y01-139	139	137±2	105	180	250	10	15	●		○

Model	Rating Action Temp. T _f (°C)	Fusing Off Temp. T _f (°C)	Holding Temp.T _c (°C)	Max. Temp. T _m (°C)	Electrical characteristics			APPROVALS		
					Rated Voltage AC (V)	Rated Current A	TÜV	VDE	CCC	
RY01-142	142	140 ⁺² ₋₃	112	180	250	10	15	●	●	○
RY01-145	145	140 ⁺² ₋₃	112	180	250	10	15	●		○
RY01-152	152	149±3	115	200	250	10	15	●		○
RY01-155	155	152±3	115	200	250	10	15	●		○
RY01-165	165	162±3	135	200	250	10	15	●		○
RY01-167	167	162±3	135	200	250	10	15	●	●	○
RY01-169	169	165 ⁺² ₋₃	135	200	250	10	15	●		○
RY01-172	172	170±2	140	200	250	10	15	●		○
RY01-180	180	177±3	150	220	250	10	15	●		○
RY01-185	185	182±2	150	220	250	10	15	●		○
RY01-192	192	190 ⁺² ₋₅	165	220	250	10	15	●		○
RY01-195	195	190 ⁺² ₋₅	165	220	250	10	15	●		○
RY01-200	200	195±5	165	250	250	10	15	●		○
RY01-210	210	205±5	170	250	250	10	15	●		○
RY01-216	216	210±5	175	250	250	10	15	●	●	○
RY01-225	225	220 ⁺² ₋₅	180	260	250	10	15	●		○
RY01-230	230	225±3	195	260	250	10	15	●		○
RY01-235	235	230±4	195	260	250	10	15	●		○
RY01-240	240	235±3	200	260	250	10	15	●	●	○
RY01-245	245	240±5	200	280	250	10	15	●		○
RY01-250	250	245±5	200	280	250	10	15	●		○
RY01-255	255	250±5	200	280	250	10	15	●		○
RY01-260	260	255±5	205	300	250	10	15	●		○
RY01-320	320	310 ⁺⁵ ₋₁₀	250	300	250	10	15	●		○

● Certified ○ Certification on application